



ITALIALOUNGE

Tessuti - Fabrics

# Bembo F

MADE IN ITALY



**013 LATTE**



**001 AVORIO**



**101 CORDA**



**201 PIETRA**



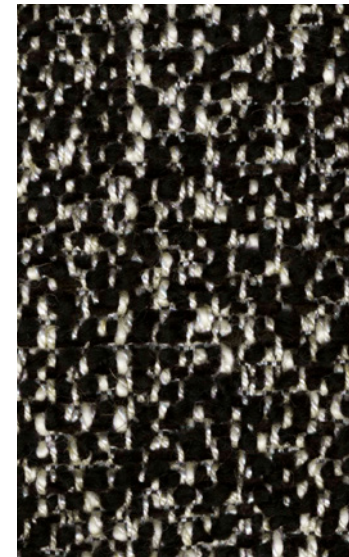
**202 TORTORA**



**214 CENERE**



**206 BASALTO**



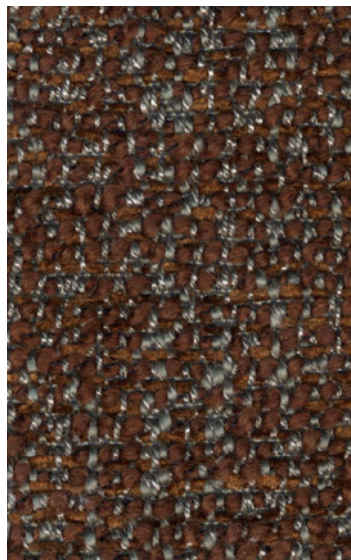
**015 ONICE**

COMPOSITION: 46% Cotton, 24%Acrylic, 13% Wool Virgin, 11% Viscose, 6% Linen / WEIGHT 830 gr/mtl

POSSONO VERIFICARSI DIFFERENZE DI COLORE IN BASE AL MONITOR - COLOUR DIFFERENCED MAY OCCUR ACCORDING TO THE SCREEN TYPE

# Bembo F

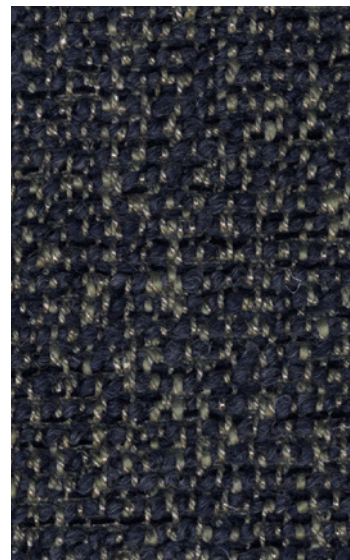
MADE IN ITALY



**216 RUGGINE**



**217 FORESTA**



**207 COBALTO**

COMPOSITION: 46% Cotton, 24%Acrylic, 13% Wool Virgin, 11% Viscose, 6% Linen / WEIGHT 830 gr/mtl

POSSONO VERIFICARSI DIFFERENZE DI COLORE IN BASE AL MONITOR - COLOUR DIFFERENCED MAY OCCUR ACCORDING TO THE SCREEN TYPE

# Capri F

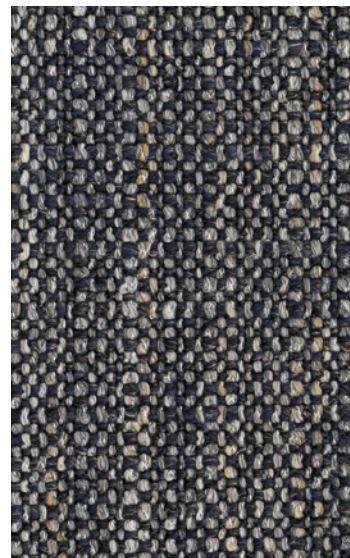
MADE IN ITALY



**026 ARGENTO**



**029 BRONZO**



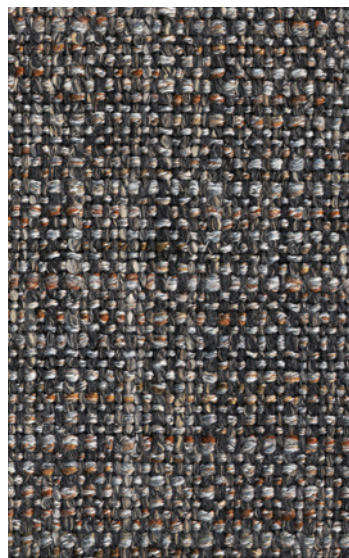
**023 AVIO**



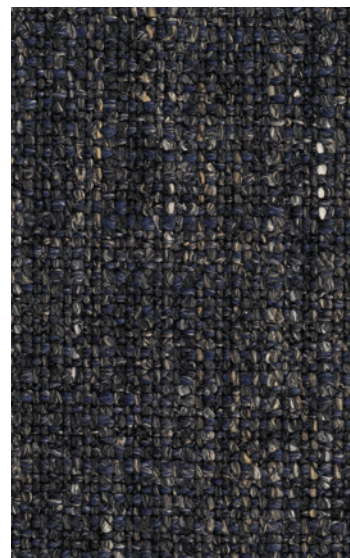
**021 ARDESIA**



**007 ACCIAIO**



**036 TABACCO**



**017 NOTTE**



**020 ANTRACITE**

COMPOSITION: 56%Acrylic , 25%Polyester, 19%Linen / WEIGHT 707 gr/mtl

POSSONO VERIFICARSI DIFFERENZE DI COLORE IN BASE AL MONITOR - COLOUR DIFFERENCED MAY OCCUR ACCORDING TO THE SCREEN TYPE

# Cocò B

MADE IN ITALY



**106** NUVOLA



**108** ARGENTO



**110** SABBIA



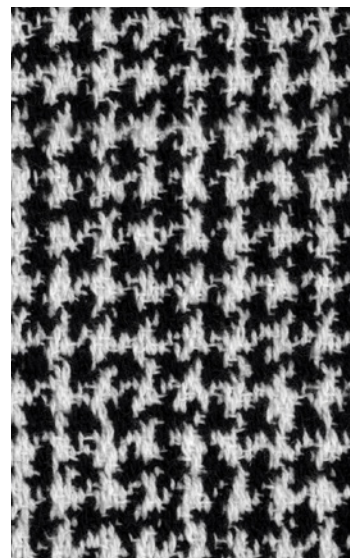
**109** TORTORA



**359** AVIO



**360** ANTRACITE



**107** BIANCO/NERO

COMPOSITION: 80% Cotton, 20%Polyester / WEIGHT 780 gr/mtl

POSSONO VERIFICARSI DIFFERENZE DI COLORE IN BASE AL MONITOR - COLOUR DIFFERENCED MAY OCCUR ACCORDING TO THE SCREEN TYPE

# Cipriani B



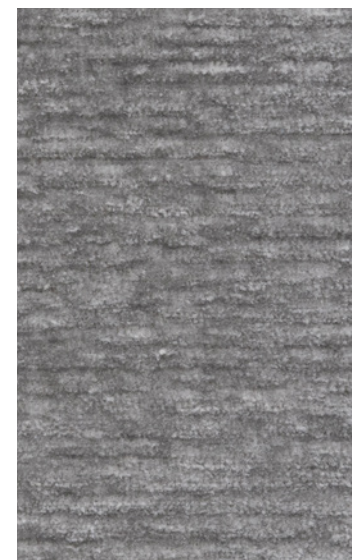
**111 OTTICO**



**100 BURRO**



**400 SABBIA**



**601 DELFINO**



**604 NEMBO**



**801 SALVIA**



**502 SENAPE**



**303 RUBINO**



**301 MATTONE**



**405 ESPRESSO**

COMPOSITION: 100%Polyester / WEIGHT 685 gr/mtl

POSSONO VERIFICARSI DIFFERENZE DI COLORE IN BASE AL MONITOR - COLOUR DIFFERENCED MAY OCCUR ACCORDING TO THE SCREEN TYPE

# Cipriani B



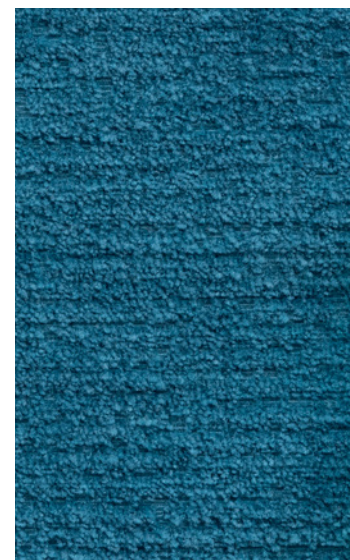
**803** PETROLIO



**702** ABISSO



**001** NOTTE



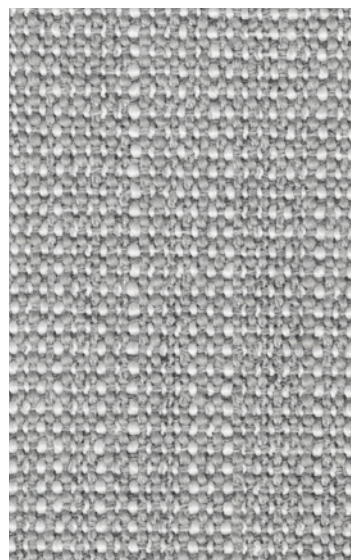
**700** LAGUNA

COMPOSITION: 100%Polyester / WEIGHT 685 gr/mtl

POSSONO VERIFICARSI DIFFERENZE DI COLORE IN BASE AL MONITOR - COLOUR DIFFERENCED MAY OCCUR ACCORDING TO THE SCREEN TYPE

# Elba D

MADE IN ITALY



**001 ARGENTO**



**002 ECRÙ**



**004 SEPPIA**



**005 OLIVA**



**011 MELANZANA**



**021 ARDESIA**



**012 ANTRACITE**



**020 CARBONE**

COMPOSITION: 45%Cotton, 40%Acetate, 10%Polyester, 5%Other Fibers/ WEIGHT 802 gr/mtl

POSSONO VERIFICARSI DIFFERENZE DI COLORE IN BASE AL MONITOR - COLOUR DIFFERENCED MAY OCCUR ACCORDING TO THE SCREEN TYPE



MADE IN ITALY



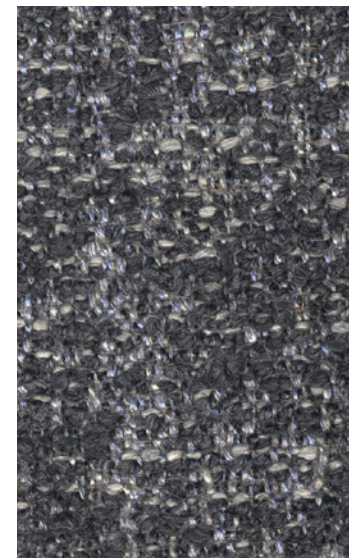
**022 AVORIO**



**024 PERLA**



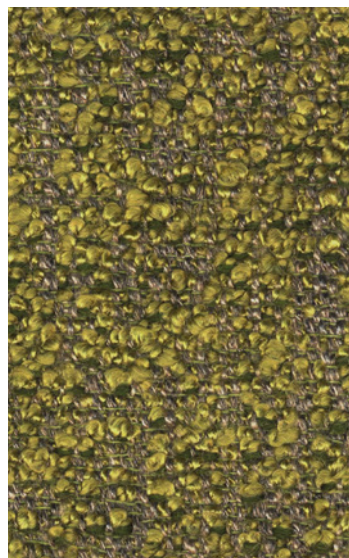
**025 PIETRA**



**014 GRAFITE**



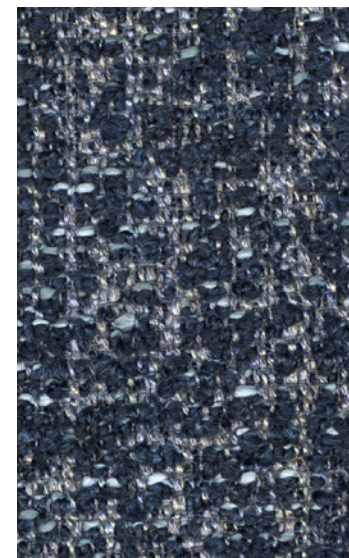
**026 SALVIA**



**002 ACACIA**



**011 OTTANIO**



**015 OCEANO**

COMPOSITION: 28% Viscose, 18% Linen, 15% Polyester, 15% Cotton, 24% Acrylic / WEIGHT 990 gr/mtl

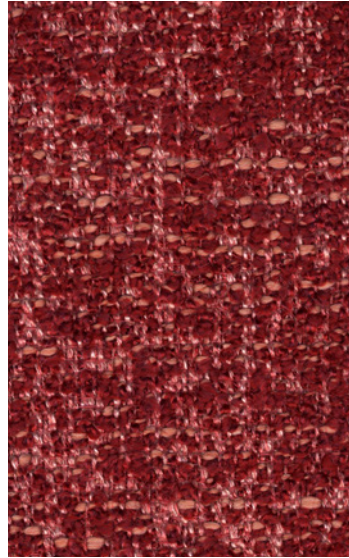
POSSONO VERIFICARSI DIFFERENZE DI COLORE IN BASE AL MONITOR - COLOUR DIFFERENCED MAY OCCUR ACCORDING TO THE SCREEN TYPE

# Foscari F

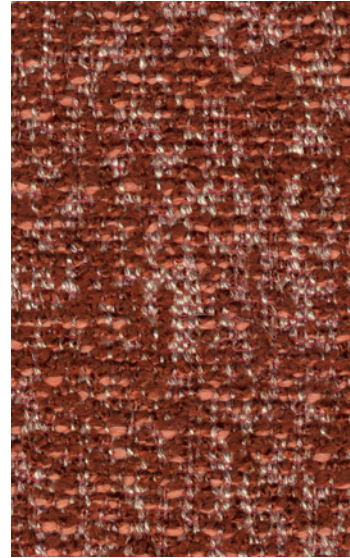
MADE IN ITALY



**018 PARMA**



**005 CHIANTI**



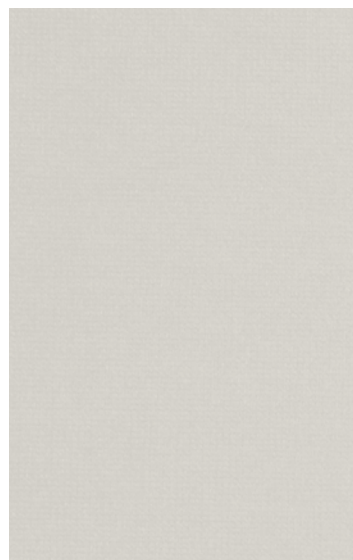
**004 MATTONE**

COMPOSITION: 28% Viscose, 18% Linen, 15% Polyester, 15% Cotton, 24% Acrylic / WEIGHT 990 gr/mtl

POSSONO VERIFICARSI DIFFERENZE DI COLORE IN BASE AL MONITOR - COLOUR DIFFERENCED MAY OCCUR ACCORDING TO THE SCREEN TYPE

# Giglio F

MADE IN ITALY



**807 GHIACCIO**



**702 GLICINE**



**701 ROSA**



**705 CICLAMINO**



**707 VIOLA**



**902 CREMA**



**905 BISCOTTO**



**401 ZUCCA**



**202 BORGOGNA**



**704 MALVA**

COMPOSITION: Pile 100% Cotton - Total 80% Cotton 10% Modal, 5% Polyester / WEIGHT 565 gr/mtl

POSSONO VERIFICARSI DIFFERENZE DI COLORE IN BASE AL MONITOR - COLOUR DIFFERENCED MAY OCCUR ACCORDING TO THE SCREEN TYPE

# Giglio F

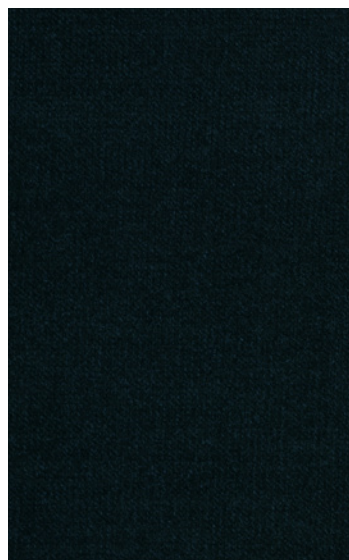
MADE IN ITALY



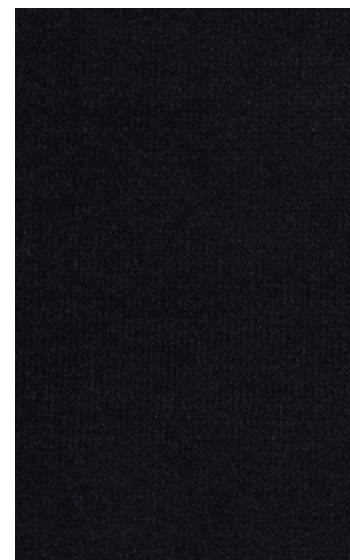
**501 OLIVA**



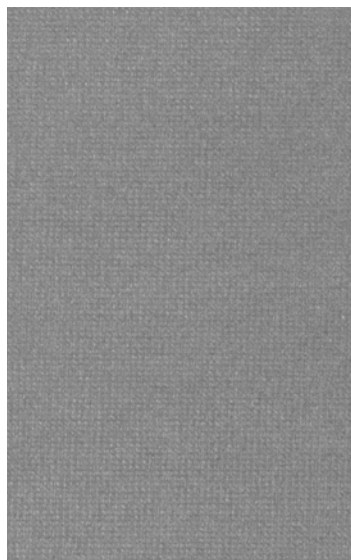
**408 SALVIA**



**602 COBALTO**



**605 PAVONE**



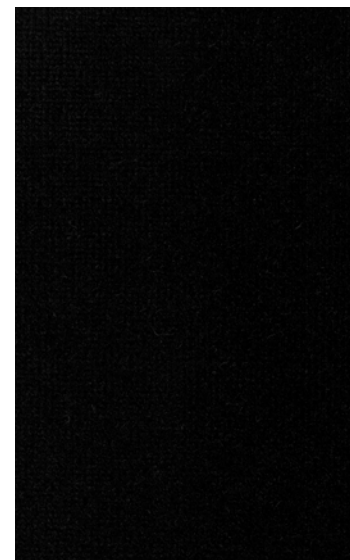
**806 NEBBIA**



**803 ACCIAIO**



**802 PIOMBO**



**800 NERO**

COMPOSITION: Pile 100% Cotton - Total 80% Cotton 10% Modal, 5% Polyester / WEIGHT 565 gr/mtl

POSSONO VERIFICARSI DIFFERENZE DI COLORE IN BASE AL MONITOR - COLOUR DIFFERENCED MAY OCCUR ACCORDING TO THE SCREEN TYPE

# Linosa B

MADE IN ITALY



**032 AVORIO**



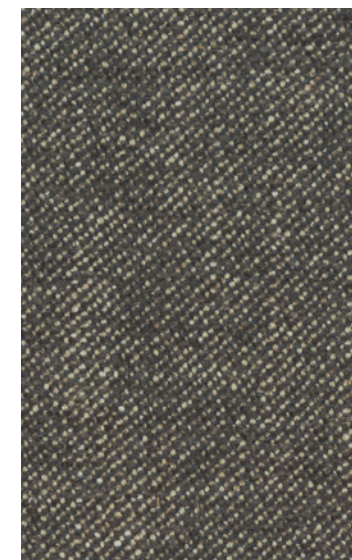
**034 TITANIO**



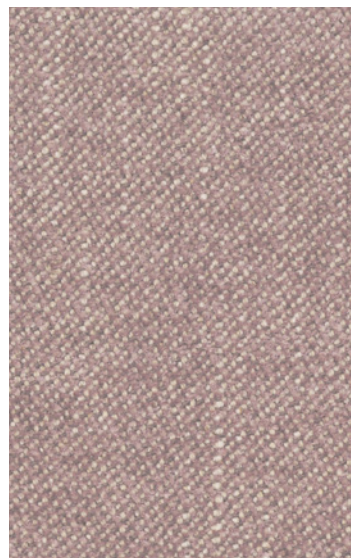
**004 SABBIA**



**029 SALVIA**



**023 ARDESIA**



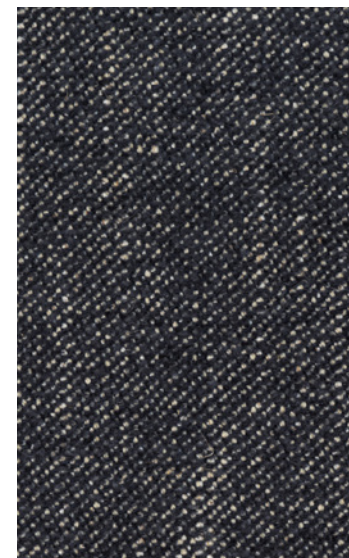
**031 ROSA**



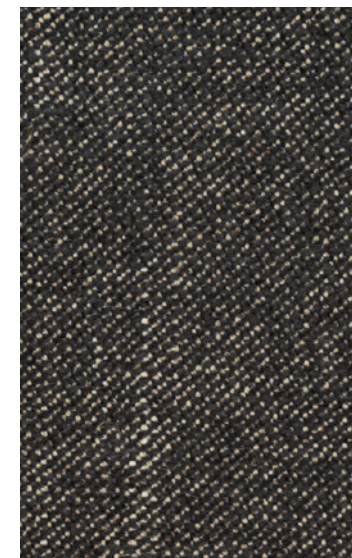
**009 MALVA**



**019 COBALTO**



**101 BLU**



**001 ANTRACITE**

COMPOSITION: 44% Cotton, 27% Viscose, 23% Acrylic, 6% Linen / WEIGHT 680 gr/mtl

POSSONO VERIFICARSI DIFFERENZE DI COLORE IN BASE AL MONITOR - COLOUR DIFFERENCED MAY OCCUR ACCORDING TO THE SCREEN TYPE

# Nisida D

MADE IN ITALY



**001 BIANCO**



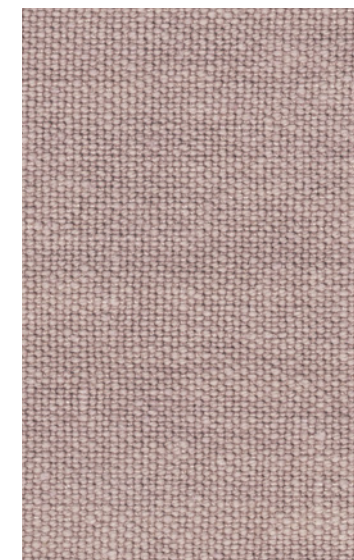
**002 PANNA**



**004 CORDA**



**101 CENERE**



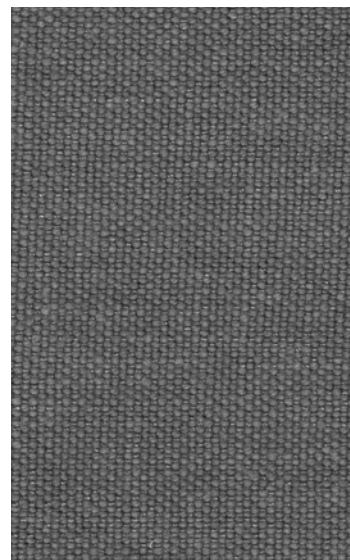
**106 CIPRIA**



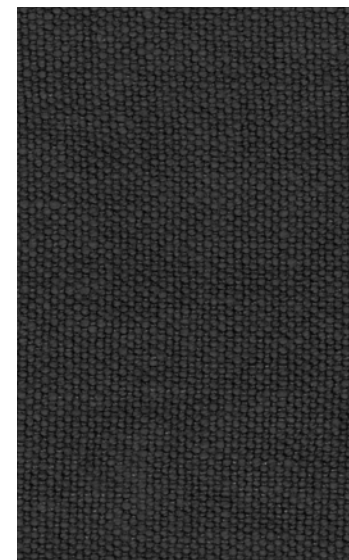
**044 PERLA**



**105 ACQUA**



**103 ARDESIA**



**116 FUMO**



**129 BLU**

COMPOSITION: 100%Linen / WEIGHT 650 gr/mtl

POSSONO VERIFICARSI DIFFERENZE DI COLORE IN BASE AL MONITOR - COLOUR DIFFERENCED MAY OCCUR ACCORDING TO THE SCREEN TYPE

# Sile B



**001 COTONE**



**014 PERLA**



**054 VISONE**



**013 PEONIA**



**043 GRANATA**



**049 SIENA**



**015 MIMOSA**

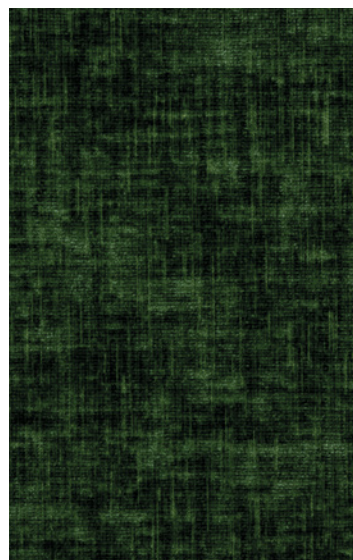


**018 PISTACCHIO**

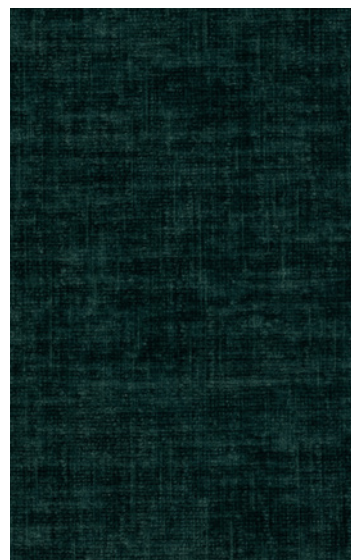
COMPOSITION: 100%Polyester / WEIGHT 504 gr/mtl

POSSONO VERIFICARSI DIFFERENZE DI COLORE IN BASE AL MONITOR - COLOUR DIFFERENCED MAY OCCUR ACCORDING TO THE SCREEN TYPE

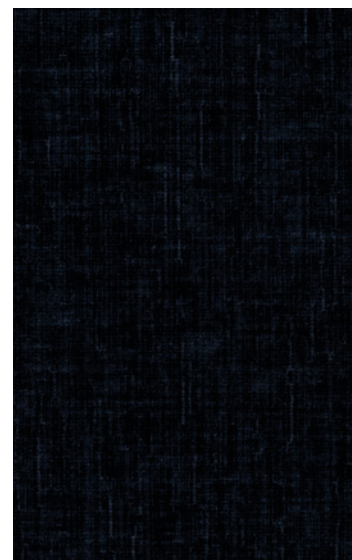
# Sile B



**068 BOSCO**



**067 OTTANIO**



**087 ZAFFIRO**



**047 INDACO**



**006 NEBBIA**



**016 CEMENTO**



**036 ELEFANTE**



**002 CARBONE**

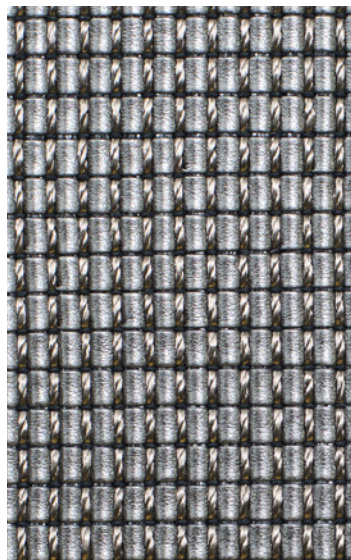
COMPOSITION: 100%Polyester / WEIGHT 504 gr/mtl

POSSONO VERIFICARSI DIFFERENZE DI COLORE IN BASE AL MONITOR - COLOUR DIFFERENCED MAY OCCUR ACCORDING TO THE SCREEN TYPE



# Decò D25

MADE IN ITALY



**Alpha 001 ACCIAIO**

COMPOSITION:  
34% Cotton  
33% Polyester  
21% Polyurethane  
9% Acrylic  
2% Viscose  
1% Other Fibres

WEIGHT 1215 gr/mtl  
BACKING:  
100% Polypropylene

# Decò D50



**Antares 001 CUOIO**



**Antares 003 MOKA**

LEATHER  
ORIGIN Bovine  
QUALITY Full grain  
FINISHING Aniline dyed  
MODE OF TANNING Chrome

BACKING:  
100% Polypropylene